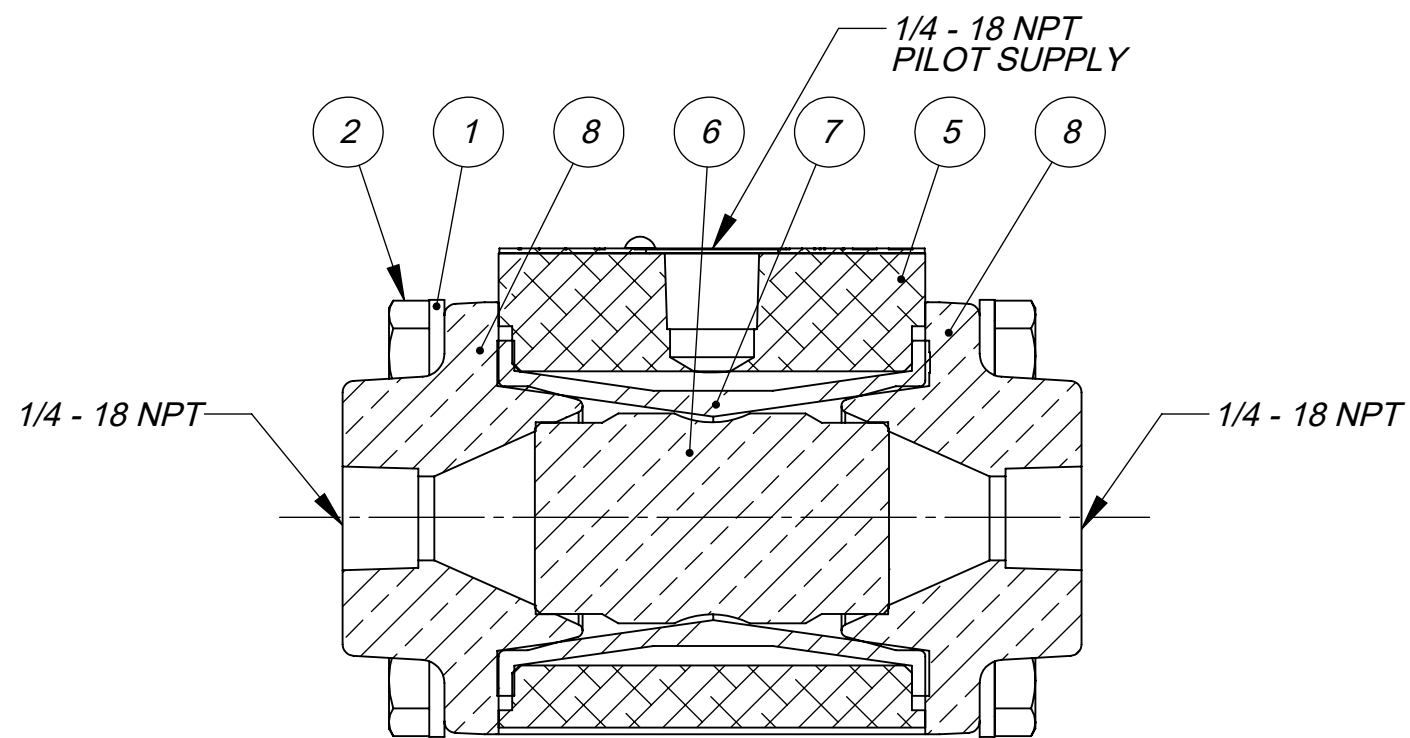
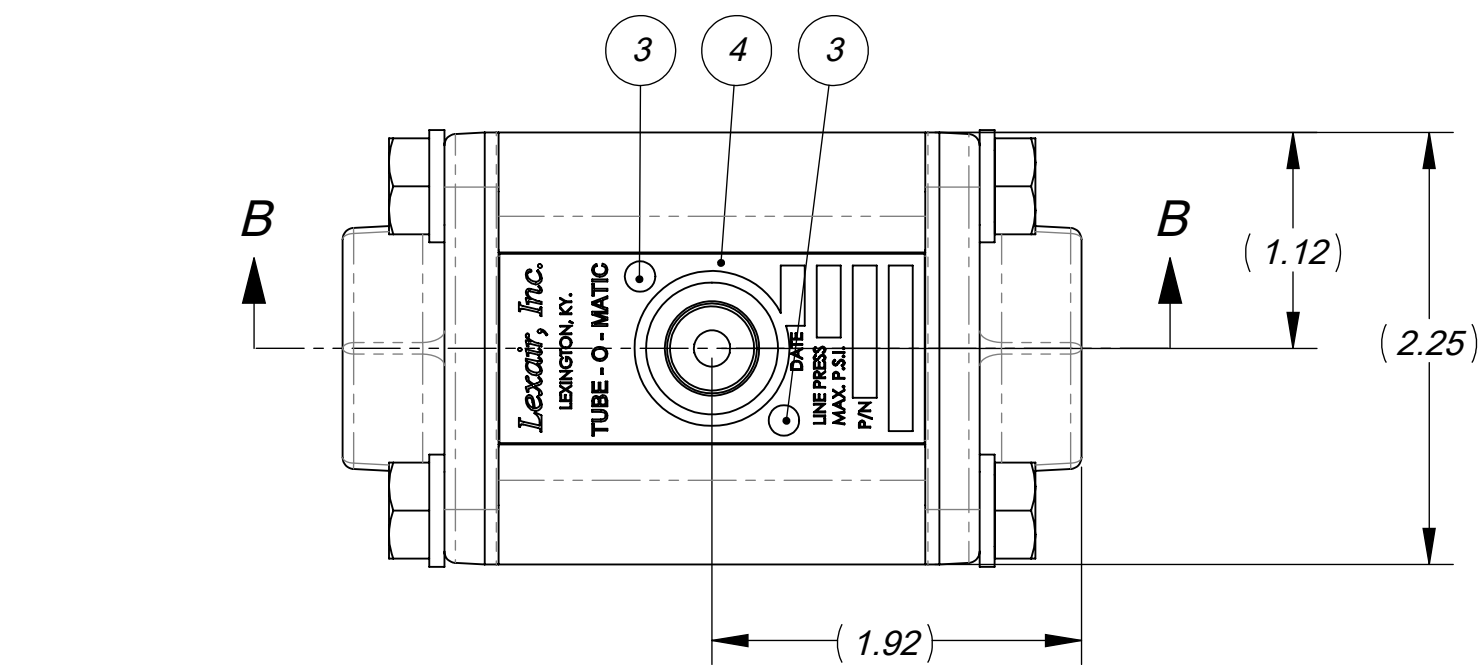
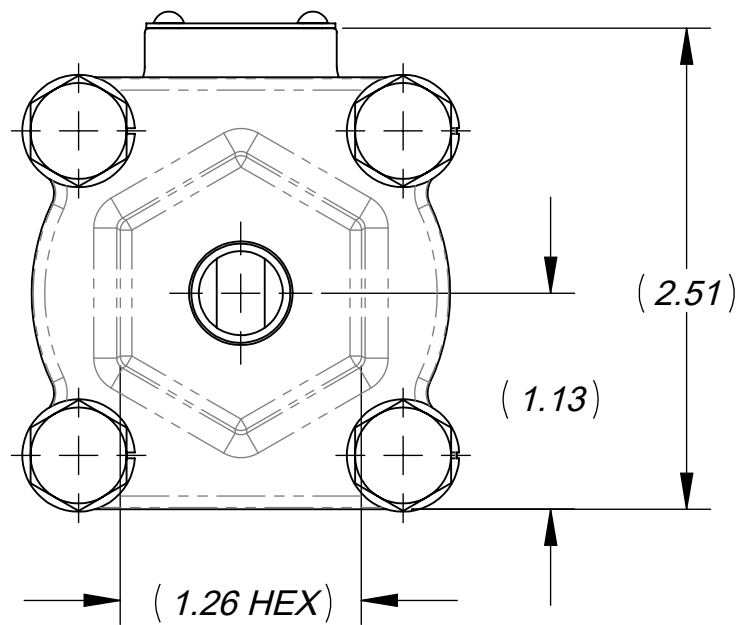
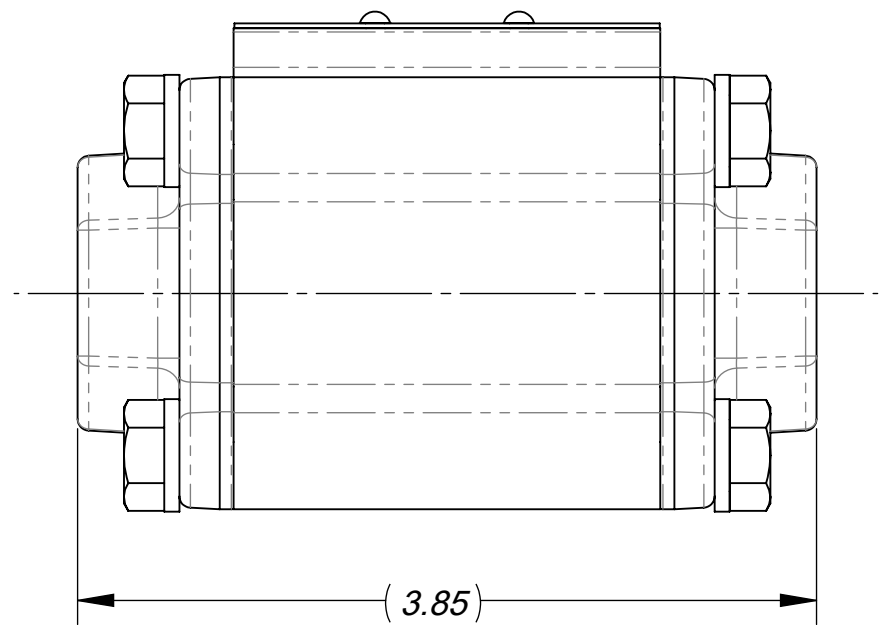


310204-SM-CC-EC



SECTION B-B



ITEM NO.	PART NUMBER	DESCRIPTION	QTY.
1	01-0201	LOCKWASHER, REGULAR, 5/16, ZINC	8
2	01-0706	SCREW, HHC, 5/16-18 X 3/4 ZINC	8
3	01-2023-2	SCREW, RIVET, #2 X .188, SS	2
4	20-1889	NAME PLATE, TUBE-O-MATIC	1
5	20-1893	BODY 1/4 3/8 1/2 NPT	1
6	SEE TBL (CC)	CENTER CORE	1
7	SEE TBL (SM)	SLEEVE	1
8	SEE TBL (EC)	END CAP	2

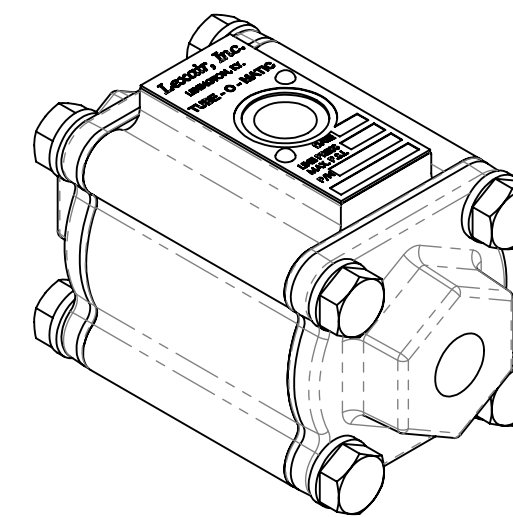
CENTER CORE OPTIONS (CC)		
CODE	MATERIAL	PART NO.
STD	NI PLT BRASS	20-1038
43	PVC	20-1361
45	STNLESS STL	20-1059
46	TEFLON	20-1058

SLEEVE MATERIAL OPTIONS (SM)		
CODE	MATERIAL	PART NO.
STD	BUNA-N	20-1037
26	VITON	20-1031
29	EPR	20-1032

END CAP OPTIONS (EC)		
CODE	MATERIAL	PART NO.
STD	NI PLT BRNZE	20-1042
59	316 STNLESS	20-1062
57	PVC	20-1065

NOTES:

1. PILOT PRESSURE TO MEDIA PRESSURE RATIO 1:1
2. OPERATING PRESSURE: 150 PSI MAX
3. TEMPERATURE RANGE: -30° F TO 225° F
4. PRIMARY OPERATOR: DIRECT PILOT
5. SERVICE MEDIA: LIQUID AND INERT GASSES
6. SLEEVE MATERIAL: SEE TABLE SLEEVE MAT. OPTIONS (SM) (FOR ALL OTHER CONSULT THE FACTORY)
7. FOR MAXIMUM SLEEVE LIFE, THE PILOT TO MEDIA PRESSURE DIFFERENTIAL, SHOULD NOT EXCEED 20 PSI. FOR MEDIA PRESSURE BELOW 50 PSI, THE PILOT PRESSURE SHOULD BE MEDIA PRESSURE PLUS 15 PSI.
8. ASSEMBLY REF. DIMENSIONS: (DIM.) = PLUS OR MINUS .07.



THIS DOCUMENT AND ITS CONTENTS ARE THE PROPERTY OF LEXAIR, INC. THEY ARE FURNISHED TO YOU ON THE FOLLOWING CONDITIONS: NO RIGHT OR LICENSE IN RESPECT OF THIS DOCUMENT OR ITS CONTENTS, EITHER OR WAIVED IN SUPPLYING THE DOCUMENT TO YOU. THIS DOCUMENT OR ITS CONTENTS ARE NOT TO BE USED OR TREATED IN ANY MANNER INCONSISTENT WITH THE RIGHTS OF LEXAIR, INC. OR TO ITS DETRIMENT AND ARE NOT TO BE COPIED, REPRODUCED, OR DISCLOSED OF, EXCEPT WITH ITS PRIOR WRITTEN CONSENT.

REVISIONS

B	REDRAWN TO CURRENT ENG. STDS. ECL: 06109 10-04-06 HWP TPO
C	UPDATED TO CURRENT ASSEMBLY ECL: 21031 06-09-2021 TES
D	REDRAWN TO CURRENT ENG. STDS. ECL: 21032 06-21-21 TES

ECL: 06109

Tolerances Unless Otherwise Specified:			MATERIAL SPEC.	PC. NO.:
TYPE	FINISHED	AS CAST	SEE TABLE	310204
DEC .00	± .015"	± .030"	PROCESS SPEC. SEE TABLE	MADE FROM:
DEC .000	± .005"	± .010"		MODEL FILE: 310204.SLDASM
FRACTIONAL	± 1/64"	± 1/32"		CAD FILE: 310204.slddrw
ANGLES °	± 1/2°	± 1°		C 310204
FINISH 175 µ in.				SHEET NO. 1 of 1 SHEETS
T-O-M ASSY, 1/4", STD.				SCALE 1:1
Lexair, Inc.			DRAWN HWP	CHECKED TPO
2025 Mercer RD, Lexington, Kentucky 40511			APRVD. TPO	APPROX. WT. 2.577 lbs.